



Sandwell Council: EWI works



Sandwell Council: Britmet tiling solution



MoJ: Lees Street LED lighting



MoJ: Leicester Court roofing and glazing installation

Net Zero

Building Solutions (the specialist building and refurbishment arm of VINCI Facilities) is a seasoned expert in the delivery of works designed to improve the sustainability of buildings and support clients on their journey to a zero carbon future. The projects below showcase Building Solutions' experience in delivering such works for customers across the UK.

Sandwell Council: Insulation

Building Solutions has secured ten contracts with Sandwell Council over the course of 15 years, which has resulted in environmental improvement works being delivered to c.19,000 homes. The improved thermal efficiency of the buildings has created a wealth of benefits – improving the wellbeing of residents, reducing the cost of utility bills, reducing carbon emissions, and reducing overall cost-to-let fees for the council and social housing providers. Examples of recent works include:

- » £4m of External Wall Insulation (EWI) works were delivered to c.350 properties, ranging from traditional brick houses to concrete-panelled houses and flats. The works have saved 1,070 tonnes of CO₂, as calculated by OFGEM (Office of Gas and Electricity Markets). The council also benefited from cost savings of c.£880k thanks to Building Solutions securing grant funding from the Government's ECO (Energy Company Obligation) scheme – an energy efficiency scheme designed to reduce carbon emissions and tackle fuel poverty.
- » 620 properties with no wall or ceiling insulation have been fully modernised. This saw Building Solutions install insulation in line with current building regulations, and clad the façades with the industry-leading and locally-manufactured Britmet metal tiling system, which provides an attractive and low maintenance solution with a 40-year warranty.

Ministry of Justice (MoJ): Lighting, roofing, glazing

Building Solutions is a key framework contractor of the MoJ and its associated bodies, including the Home Office, UK Border Force, HMI Probation and the Crown Prosecution Service. The company has delivered key works to support the MoJ in its journey to Net Zero, including:

- » **Lees Street:** Refurbishment of a high-security probation centre for ex-offenders, including the installation of innovative whole-life costed low-energy lighting, designed to reduce CO₂ emissions while improving the working environment.
- » **Leicester Court:** Refurbishment of a vast 3,522sq.m flat roof. This included installing an insulated roofing system throughout, along with double-glazed roof lights and atrium glazing.
- » **HMP Belmarsh:** Modernisation of one spur within the prison's High Security Unit. The environmental improvement works included installing LED lighting and replacing all external glazing with double-glazed vented windows.

To further support the MoJ in its journey to Net Zero, Building Solutions has partnered with the social enterprise Recycling Lives to ensure that 99% of waste is diverted from landfill, equating to 127.6 tonnes in 2020 alone. Importantly, Recycling Lives uses the revenue from its waste service to fund vital community support programmes, including prisoner rehabilitation initiatives and food distribution services for vulnerable residents in the community.

LOW CARBON SOLUTIONS

- » Double-glazed windows, roof lights, and doors.
- » Loft insulation.
- » Cavity wall insulation.
- » Insulated flat roofing solutions.
- » External wall insulation (EWI).
- » Photovoltaic (PV) arrays.
- » Electric vehicle (EV) charging stations.
- » Combined heat and power (CHP) systems.
- » Heat recovery systems.
- » LED lighting.

KEY CUSTOMERS





Met Police: Kilburn Police Station PV array



Peabody: Whitecross EWI works



Whiston Hospital: CHP installation



Electrical vehicle charging bays

Met Police: PV

As a key framework partner, Building Solutions has delivered a wide variety of works for Met Police. A recent £320k project saw the team refurbish the roof at Kilburn Police Station and install a photovoltaic array to provide low carbon electricity.

LocatED: PV

LocatED is a government-owned organisation that buys and develops sites for schools across England. Having conducted the demolition of one of LocatED's sites, the contract team re-purposed more than 100 PV panels that would otherwise have been discarded. They were subsequently installed at The Brightwell (a healthcare charity in Bristol), providing the facility with free renewable electricity.

Peabody: Insulation

Building Solutions delivered major EWI works to two residential tower blocks on the Whitecross Estate in Islington. Delivered for Peabody – one of the UK's leading housing associations – the project required the removal of the buildings' existing flammable cladding and the installation of new fire-rated, thermally efficient and aesthetically pleasing EWI solutions. Due to the fire risks of the existing cladding, all works were fast-tracked and a team of fire marshals were appointed to provide a waking watch.

London Borough of Havering: Insulation

Building Solutions delivered a £930k refurbishment of 39 semi-detached properties in Havering, including the installation of EWI and double-glazed windows and doors.

The project's success led to Building Solutions being invited by the Government to take the lead in a research exercise to inform the roll out of EWI to council houses across the UK. This saw Building Solutions conduct EWI installation on a variety of dwellings to assess the impact on energy performance and costs.

Sanctuary Housing: Insulation

Sanctuary Housing utilised Building Solutions to conduct the full external refurbishment of 55 outdated 1960s properties in the South East as part of its Quality Homes programme. The £1.56m contract included the installation of cavity wall insulation, loft insulation, EWI, and double-glazed windows and doors.

Whiston Hospital: CHP and heat recovery system

St Helens and Knowsley Teaching Hospitals NHS Trust and its Special Projects Vehicle (SPV), New Hospitals Ltd, sought to reduce carbon emissions and energy costs at Whiston Hospital. To achieve this goal, the hospital collaborated with Building Solutions to install two innovative technologies – a 1.3MW CHP (Combined Heat and Power) system and a heat recovery system.

The CHP system uses a gas-powered engine to generate electricity, and captures the resulting heat for use in the building's hot water system, while the heat recovery system recovers and reuses heat normally lost through the exhausts of the site's two boilers and CHP.

The system provide fantastic benefits, including:

- » Monthly outputs of 800,000kWh of electricity, 820,000kWh of generated heat, and 440,000kWh of recovered heat.
- » Carbon emissions reduced by 3,600 tonnes per year.
- » Energy costs reduced by £960k per year, resulting in an anticipated payback period of just four years, against the systems' fifteen-year lifespan.

Shell: EV charging

Through its partnership with Actemium (part of the VINCI group) and NewMotion (a Shell company), VINCI Facilities is able to provide turnkey solutions for EV charging stations. A key contract sees the partnership responsible for installing and maintaining the EV infrastructure across c.200 of Shell's UK forecourts.

CUSTOMER SATISFACTION

"Building Solutions is continually outperforming other contractors within our supply chain and in doing so has set a new standard of best practice for all partners to aspire to. Any issues have been acknowledged honestly and dealt with swiftly, and I've been particularly impressed with the use of digital solutions, which have facilitated an unprecedented level of efficiency in managing and monitoring the contract. Importantly, the quality of the works is exemplary, with the refurbished properties often looking even smarter than the neighbouring private homes."

Mark Painter, Contract Manager, Sandwell Council

"The service from Building Solutions has been exceptional. Their team are always professional, helpful and often go the extra mile, delivering a service that exceeds expectations. Every challenge is approached with a 'can do' attitude, and the team never hesitate to do what is needed, even if it's above and beyond their usual duties."

Katarzyna Wroblewska, Surveyor, Peabody

"The installation of a CHP system has been the most challenging energy scheme completed at the hospital. The project was seamlessly managed by VINCI Facilities, using its vast knowledge of the hospital facilities to ensure no disruptions to day-to-day operations. The end result is providing efficiency, environmental and economic benefits to all stakeholders."

Andy Cannon, Regional Manager, New Hospitals Ltd

London Borough of Havering: EWI works



BUILDING SOLUTIONS

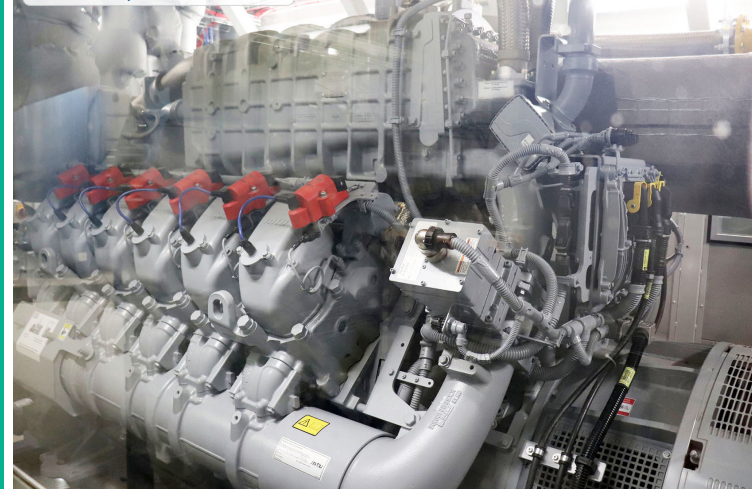
For further details, please contact:

Matt Hickman: 07711 597741, matt.hickman@vincifacilities.com

Steve Edgson: 07901 104415, steve.edgson@vincifacilities.com

www.vincifacilities.com

Whiston Hospital: CHP installation



London Borough of Havering: EWI works



Peabody: Whitecross EWI works



LocatED: The Brightwell PV array



Sanctuary Housing: EWI works



Moj: Leicester Court double-glazed roof lights

